

S-Quick coupler

For all excavators in the 2,200–13,200 lbs weight classes

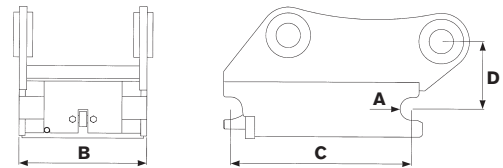
- » Can be supplied with hydraulic or mechanical locking.
- » Hydraulic locking for speedy attachment and tool changes straight from the cab.
- » Play-free connection.
- » Changeable for deep and shallow digging.
- » Robust, reliable and affordable.
- » Low installation dimensions.
- » Low weight.
- » Welded, high-strength steel.



Specifications

| Model | S30 | S40 |
|--|---------------|---------------|
| Axle diameter: (inch) | 1.2 | 1.6 |
| Width: (inch) | 7.1 | 7.9 |
| Length: (inch) | 9.1 | 11.8 |
| Construction height: (inch)* | 4.3 | 4.3 |
| Weight: (lbs)* | 33 | 55 |
| Recommended hydraulic pressure open/closed (psi) | 3,050/435–870 | 3,050/435–870 |
| Max hydraulic pressure: (psi) | 3,200 | 3,200 |
| Base machine weight: (lbs) | 2,200–4,410 | 4,410–13,200 |

*Depending on attachment



CHANGE THE WORLD OF DIGGING