

# Automatic quick hitch

## Automatic machine hitch for excavators 3–40 tonnes

**Q-Safe™**

Connect and disconnect your tiltrotator or other hydraulic tools without having to leave the cab. Comfort, safety and profitability – standard engcon features. All purchases of engcon's machine hitches, tiltrotators and control systems include EC-Oil, engcon's fully automatic quick hitch system.

» Hydraulic locking with fourfold safety:

1. Electronic sensors detect when both pins have contact
2. A check valve prevents the hydraulic cylinder from opening even if a hose ruptures or a pressure drop should occur
3. Powerful exterior springs keep the coupler locked even if the electronics and hydraulics fail.
4. Unique lock bolt design provides additional safety. Because the bucket axle abuts the hitch side plates, it cannot drop out of position even if all three of the preceding steps should fail.

- » Front and rear locks minimises the risk of accidents caused by swinging tools and attachments
- » The machine hitch is supplied as standard with external audible and visible warning signals to alert the surrounding area
- » Quick hitch with all 4 hooks facing the direction of excavation doubles the contact surfaces. This means digging forces are distributed evenly across the hitch, minimising the risk of play between the machine hitch and the tool
- » The standardised control panel simplifies control of both the machine hitch and tiltrotator hitch, which minimises the risk of incorrect operation
- » With the ground pressure function\*, the tool can only be removed when it exerts a given pressure on the ground. This minimises the risk of dropped buckets
- » Welded high-strength steel
- » Fits all excavators in the specified weight class independent of control system
- » The hook is safety classified in compliance with EN ISO 12100-1/A1:2009 and EN ISO 12100-2/A1:2009
- » This hitch type is also fitted as standard equipment under engcon tiltrotators with hitch sizes S40–S80

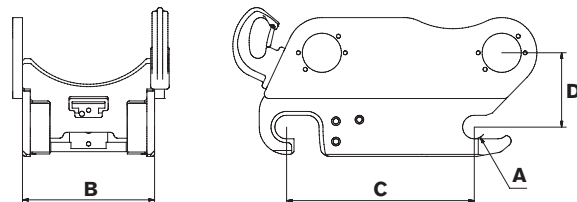
\*Optional extras



### Specifications

Type	S40	S45	S60	S70	S80
Axle diameter A: (mm)	40	45	60	70	80
Width B: (mm)	200	290	340	450	590
Length C: (mm)	300	430	480	600	670
Construction height D: (mm)	135	140	170	190	270
Weight*: (kg)	60	100	180	290	370
Recommended hydraulic pressure open/closed (MPa)	21–25	21–25	21–25	21–25	21–25
Max hydraulic pressure: (MPa)	35	35	35	35	35
Base machine weight: (t)	3–6	6–11	12–19	20–30	27–40

\*Depending on attachment



**CHANGE THE WORLD OF DIGGING**

engcon International | Box 111, SE-833 22 Strömsund, Sweden

Phone +46 670 178 00 | E-mail international@engcon.com | Web engcon.com